

# MAKING SCHOOL HOME: THERAPEUTIC DESIGN FOR MENTALLY-DISABLED STUDENTS

AUTHORS :

ANNISA NURAZELINA

TUTIN ARYANTI

YUDHISTIRA KUSUMA



## MAKING SCHOOL HOME: THERAPEUTIC DESIGN FOR MENTALLY-DISABLED STUDENTS



### Planning and Design

Implementing therapeutic design in a special school for mentally-disabled students



### Special Education/ Special School - C

Special School-C is aimed for students with mental disability or persons with intellectual disability or having low adaptability



### Mental Disability

Sebuah kondisi dimana Individu yang terganggu kemampuan fungsi kognitif karena tingkat kecerdasannya di bawah rata-rata.

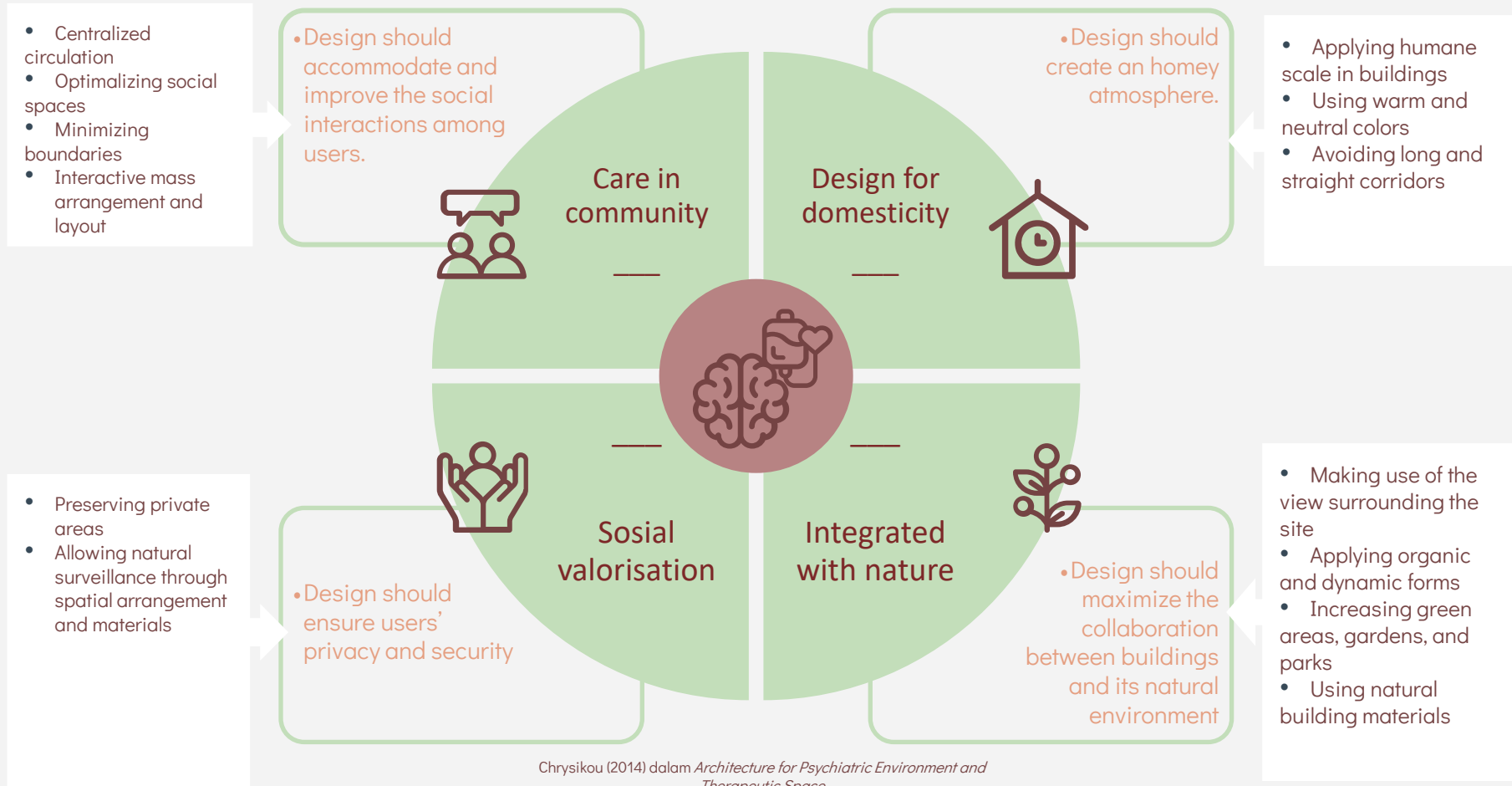


### Arsitektur Terapeutik

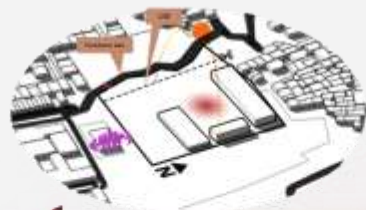
Konsep yang mengedepankan lingkungan, berfokus pada proses interaksi dengan psikologis dan fisiologis pengguna

# THERAPEUTIC ARCHITECTURE

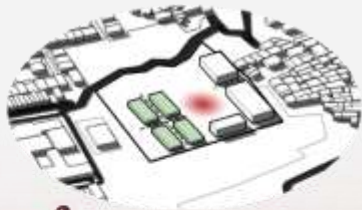
Healing therapeutic is an architectural concept encouraging the use of design as media and a means of therapy. (Schaller, 2012)



Chrysikou (2014) dalam *Architecture for Psychiatric Environment and Therapeutic Space*



**1** Tanggapan bentuk massa berdasarkan respon dari arah lintasan matahari dan regresi (G.S.B, K.L.B) serta penyusunan massa membentuk sirkulasi terpusat



**2** Pemecahan jumbuh massa bangunan berdasarkan fungsi dan sebagai alat sirkulasi di dalam kawasan



**3** Pembagian fungsi massa berdasarkan zonasi dan pembentukan pola perkerasan



**4** Fillet sudut tajam pada massa bangunan utama yang di dalamnya terdapat banyak aktivitas utama anak tunagrahita



The outdoor areas from the main gate provide adequate space for hyperactive users and stimulate interactions for passive users.



R. KELAS

# CARE IN COMUNITY

Design should accommodate and improve the social interactions among users.

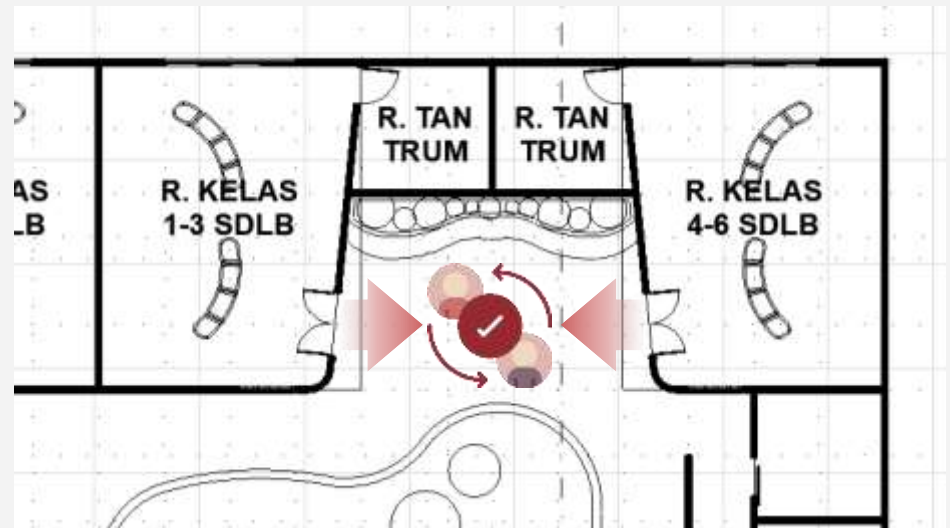
- The use of centralized circulation
- More communal spaces
- Doors are made face to face to increase social interaction
- Spiral ramp as a circulation route and space for social interaction
- U-shaped classroom layout



AMPHITHEATER



SPIRAL RAMP





FASAD GD UTAMA



KORIDOR



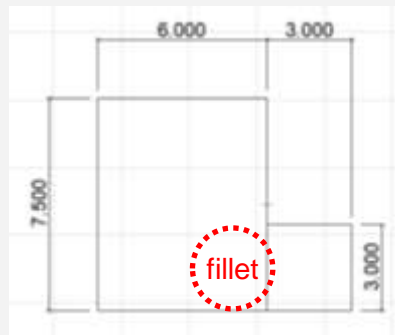
R. TANTRUM

# DESIGN FOR DOMESTICITY

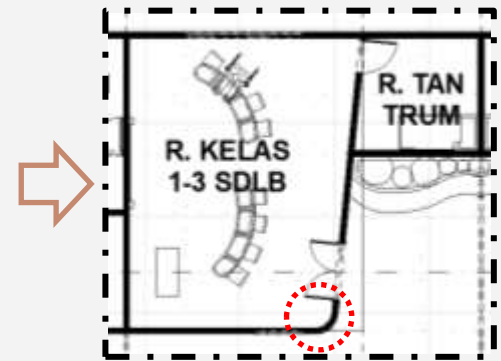
Design should create an homey atmosphere.

- Openings are house-shaped
- Providing tantrum rooms
- Cornerless classrooms
- Low-rise buildings

Skematik modul ruang kelas



Implementasi tema





INNERCOURT



WAITING ROOM - MAIN ENTRANCE



ARTIFICIAL HILLS

# SOCIAL VALORISATION

Design should ensure users' privacy and security, and help users to focus, not distract.

- The classroom openings are positioned at the rear and orienting toward the inner court.
- The use of cluster layout system in the main building
- The use of materials that allow surveillance
- Artificial hills in the landscape as a place of escape



WAITING ROOM (ENTRANCE)

- Skylight to let more light to penetrate
- More sitting area in the waiting room



WAITING ROOM (MAIN BUILDINGS)

- Parent's waiting room



INNERCOURT



TAMAN



GAZEBO

# INTEGRATED WITH NATURE

Design should maximize the collaboration between buildings and its natural environment

- Inner court in the main buildings
- Gazebo for outdoor learning
- The use of skylight for indoor court
- Spacious and orderly space to move, and safe materials



*Chrysanthemum*



*Snake Plant*



*Rosemary*



*Peace Lily*



*Lavender*



*English Ivy*





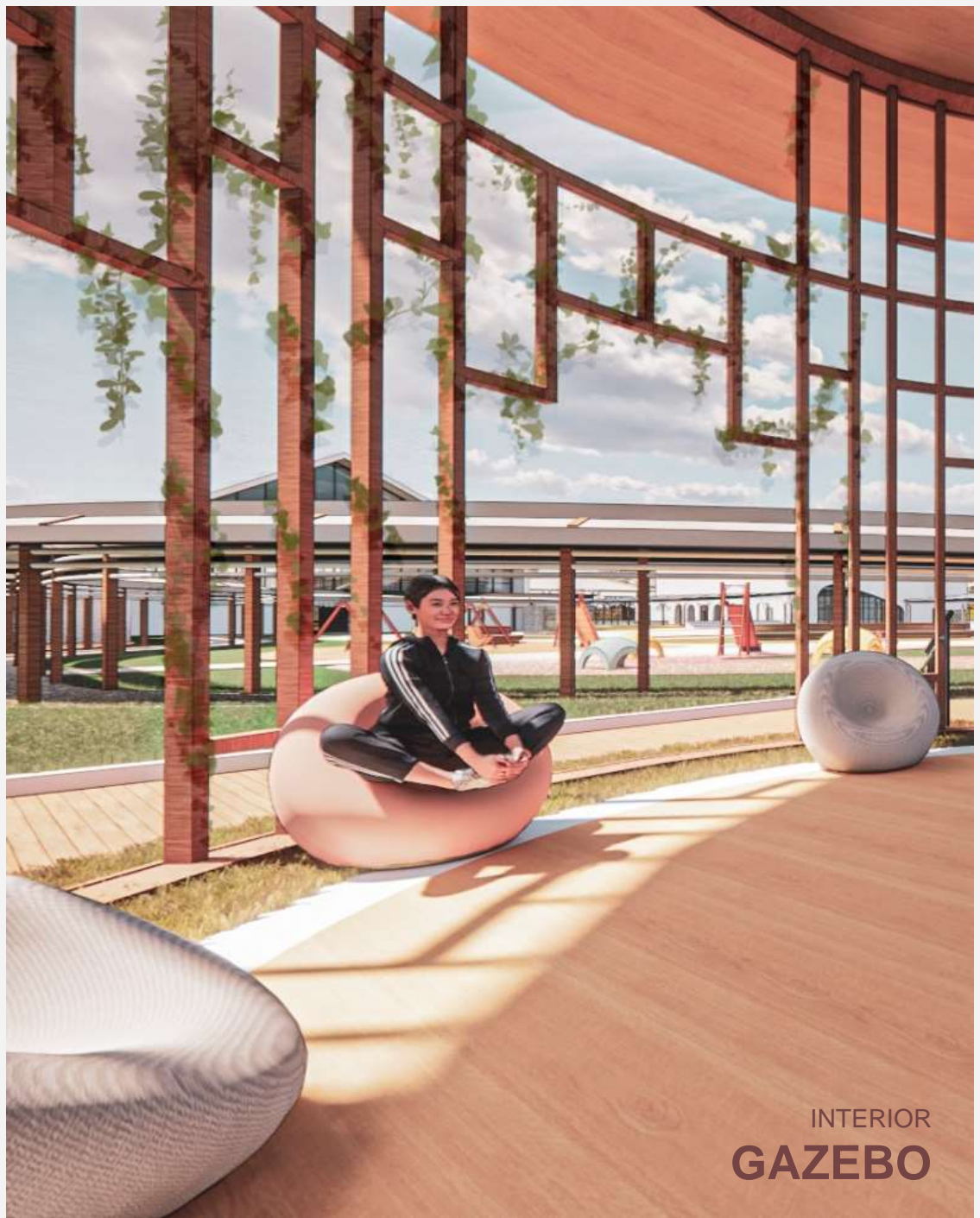
EXTERIOR  
**SPIRAL RAMP**



EXTERIOR  
**PLAYGROUND**



EXTERIOR  
**THE ESCAPE HILL**



INTERIOR  
**GAZEBO**



INTERIOR  
**WAITING ROOM | MAIN ENTRANCE**



INTERIOR  
**CLASSROOM**



INTERIOR  
**INNER COURT**



INTERIOR  
**CORRIDOR**



INTERIOR  
**CORRIDOR**