



UNIVERSITAS
SUMATERA
UTARA



Exploring the Relationship Between Media Use and Resilience in The Context of Green Communities

habibfardianms@gmail.com, Researcher/Siregar, Habib Fardian Muhammad, Sembiring, Dicky Andreas



International Symposium and Workshop
on Sustainable Buildings, Cities, and Communities
"Building Low Carbon Future: Decarbonizing with Impact"





Introduction

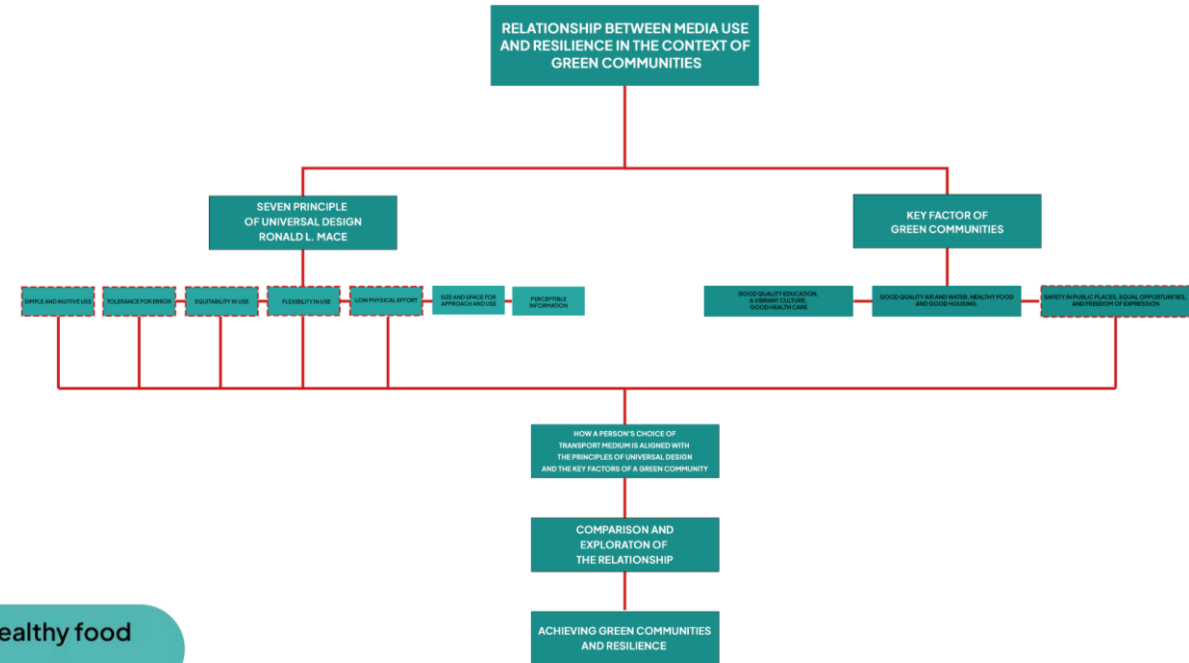
- The study investigates the impact of transport media on sustainable behavior and personal resilience in green communities.
- It aims to understand the influence of different types of media on attitudes, accessibility, inclusivity, and physical activity levels.
- The research contributes to existing literature on green communities, sustainable behavior, and resilience, offering practical implications for urban planning and community development.

Method

By combining principal from :

1. Ronald L. Mace principal of universal design,
2. three key factors of green communities

Based on the discussion itself, the author wants to limit the things that will be discussed.

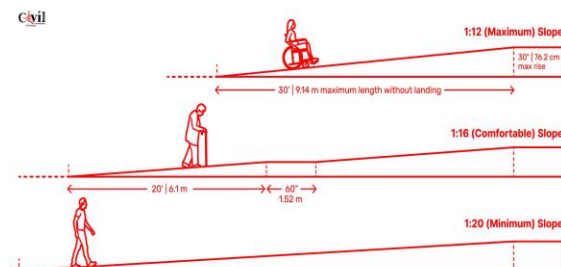


KEY FACTOR OF GREEN COMMUNITIES

- Good quality air and water, healthy food and good housing.
- Good quality education, a vibrant culture, good health care,
- Safety in public places, equal opportunities, and freedom of expression

Result and Discussion

- Based on the findings of the literature study, it can be said that each mode of moving horizontally and vertically has its own advantages and disadvantages.
- where a way of transport can be easily accessed by all kinds of people of different abilities, but takes up a lot of space and costs a lot of money.
- where on the other hand there is a way for a person to move locations can flow with a large number of people in the shortest time but not accessible to everyone with different abilities.



Source : <https://engineeringdiscoveries.com/>

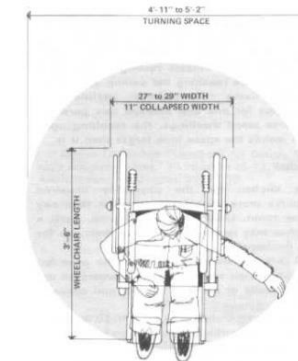
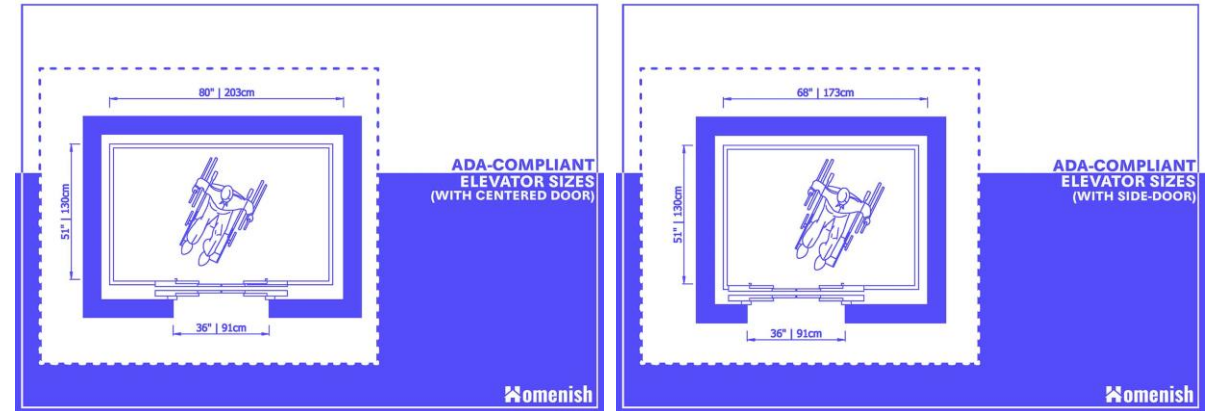


Fig. 9 Wheelchair dimensions.*

Source : Time Saver standards for building type

Result and Discussion

Passenger	Rated Capacity (kg)	Speed (m/s)	Car Size (mm)		Shaft Dimensions (mm)
			A×B	E	C x D
6	450	1 1.5/1.6 1.75	1100×1100	700	1850×1500
8	630	1 1.5/1.6 1.75	1400×1100	800	1900×1700
10	800	1 1.5/1.6 1.75	1400×1350	800	2100×2000
13	1000	1 1.5/1.6 1.75	1600×1400	900	2100×2000
16	1250	1 1.5/1.6 1.75	1900×1500	1000	2400×2200
18	1350	1 1.5/1.6 1.75	1900×1600	1000	2400×2300
21	1600	1 1.5/1.6 1.75	2000×1700	1100	2500×2400



- The design and availability of transport options in green communities significantly impact their accessibility, inclusiveness, physical activity, and user experience, thereby enhancing overall community development and resilience.



Conclusion

Impact of Transport Media Choices on Green Communities and Resilience

Principles of Accessibility:

- Ronald L. Mace's universal design principles emphasize equitable use, flexibility, simplicity, information, tolerance for error, low effort, and appropriate size and space.
- The choice of transport media impacts ease of use, physical effort required, and accessibility for diverse mobility abilities.

Factors Related to Green Communities:

- The choice of transport media influences sustainability, inclusivity, and community well-being.
- the use of ramps rather than stairs in green communities reflects a commitment to universal design principles advocated by Ronald L. Mace and aligns with the key factors of green communities by promoting accessibility, inclusivity, and sustainability.
- Inclusivity of transport options contributes to community well-being and resilience.



References

- [1] A. H. a. M.-J. V.-A. Adam Meijer, "Comparison Of Stair Descent And Ramp Descent During Performance Of Cognitive Secondary Task In Elderly Community- Dwelling Adults," JAGS, vol. 61, 2013.
- [2] B. G. E. L. P. C. S. K. B. a. R. G. Tiana M. Bochsler, "Seeing Steps and Ramps with Simulated Low Acuity: Impact of," National Institute Of Health, September 2012.
- [3] Dazen Elevator, "A Comprehensive Guide to Passenger Lift Sizes," 2015-2023.
- [4] Delfar Elevator Co., Ltd., "How Much Does an Escalator Cost?," 2023.
- [5] Department of Justice, 2010 ADA Standards for Accessible Design, ADA website, 2010.
- [6] Disabled World, "Universal Design for Seniors and Disabled," 05 April 2022.
- [7] Engineering Discoveries, "Comprehensive Guide And Details About Ramp Slopes Design".
- [8] H. Sadatsafavi et al., "A Blueprint for Healthy Communities-Case Study of Mueller Community and Colony Park project in Austin, Texas".
- [9] K. G. W. a. R. L. Shehab, "A Survey Of Ramp And Stair Use Among Older Adults," in IEA 2000/HFES 2000 Congress, Norman, Oklahoma , 2016.
- [10] L. Zhang, M. Zhang, W. Yang and Q. Rao, "Inclusive Design in Urban Rail Transit Information Service: Framework, Design, and Evaluation".
- [11] M. K. Smith, "Sustainable communities and neighbourhoods. theory, policy and practice," infed.org, 20 Juni 2019.



References

- [12] National Low Income Housing Coalition, "Universal Design for Seniors and People with Disabilities," 30 September 2021.
- [13] N. Kabiri and M. R. Sebti, "Qualitative Evaluation Of The Disables' Traffic At The Entrances Of Five Cities Of Golestan Province".
- [14] N. Sze and K. Christensen, "Access to urban transportation system for individuals with disabilities".
- [15] P. J. Clarke, "The Role of the Built Environment and Assistive Devices," Journals of Gerontology, 2014.
- [16] P. KellyCarr, "Universal Design: A Step toward Successful Aging," Aging Research, vol. 2013, p. 8, 2012.
- [17] S. Green, "Standard Elevator Dimensions (For Residential & Commercial Elevators) with 3 Drawings," 03 Juni 2021.
- [18] T. Dale, "How Much Does a Wheelchair Ramp Cost to Install?," 28 Agustus 2023.
- [19] T. Fian and G. Hauger, "Composing a Conceptual Framework for an Inclusive Mobility System".
- [20] T. Straatemeier and L. Bertolini. "Joint Accessibility Design". Transportation Research Record. vol. 2077. no. 1. pp. 1-8. Jan. 2008. 10.3141/2077-01.
- [21] V. Alagappan, A. Hefferan and A. Parivallal, "Exploring accessibility issues of a public building for the mobility impaired. Case study: interstate bus terminal (ISBT), Vijayawada, India".
- [22] Viritopia Team, "The Importance of Creating Green Communities," 14 May 2020.
- [23] Y. Zhang and D. Fu, "Analysis of Urban Design Methods Based on Eco-City Green Blocks".
- [24] Z. M. Utari and N. R. Kusuma, "Accessibility for Persons with Mobility Impairment at Bus Stops"